

LINKBOOK

WIFI signal enhancing folio for iPad mini



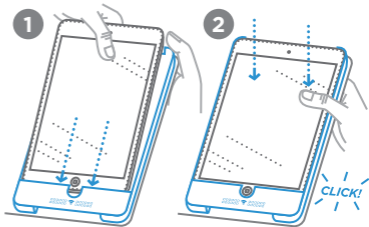
USER MANUAL

Download a PDF version at:
www.absolute.com.tw

.....

TO PUT IT ON:

.....



STEP 1: Slide the bottom of the iPad Mini into the LINKBOOK first.

STEP 2: Push the top of the iPad Mini in until you feel a 'click'.

TO TAKE IT OFF:

KEEP IN MIND:

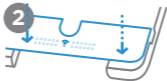
Continuously putting on and off the EMW element will result in a mechanical structure failure. Please avoid doing so. Thanks.

EMW ELEMENT. (Keep in mind that there is no need to remove this element)

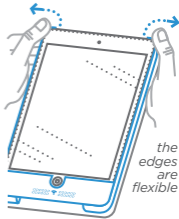
1: To take it off, push the WI-FI symbol until it detaches.



2: To put it on again, push in until you hear a 'click'.



CASE: Pull off the case's top corners. You can now separate the iPad Mini.





This belongs to the:
LINKBOOK SERIES

www.absolute.com.tw · info@absolute.com.tw

Find us here too:

