

ABSOLUTE'S LINKASE SERIES:

# LINKASEPRO



Signal & power booster / Amplificador de señal y batería / 增強收訊與延長電力 / シグナル+バッテリー拡張

IPHONE 6 - PLUS 



**EXTENDED USER MANUAL**  
ENGLISH - P. 1

**MANUAL DE USUARIO EXTENDIDO**  
ESPAÑOL - PRÓXIMAMENTE

**擴展用戶手冊**  
中文 - 即將推出

**拡張ユーザーマニュアル**  
日本語 - すぐに来る

**ABSOLUTE**

TRUE MOBILITY

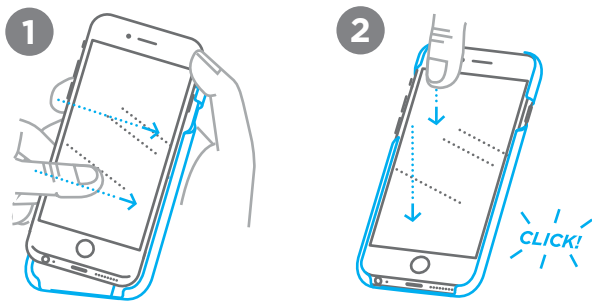
[www.absolute.com.tw](http://www.absolute.com.tw) · [info@absolute.com.tw](mailto:info@absolute.com.tw)

## SUMMARY

1. HOW TO FIT LINKASE PRO
2. HOW TO USE THE EMW ELEMENTS
3. ABOUT 3G/4G EMW:
  - A. WHO CAN BENEFIT FROM 3G EMW?
  - B. WHO CAN BENEFIT FROM 4G EMW?
  - C. WHEN TO USE 3G/4G EMW?
  - D. WHAT BENEFITS TO EXPECT WITH 3G/4G EMW
  - E. HOW DOES 3G/4G EMW WORK?
  - F. HOW MUCH IMPROVEMENT CAN YOU GET WITH 3G EMW?
  - G. HOW MUCH IMPROVEMENT CAN YOU GET WITH 4G EMW?
4. ABOUT BATTERY OPTIMIZATION:
  - A. WHO CAN BENEFIT FROM BATTERY OPTIMIZATION?
  - B. WHEN DOES OPTIMIZATION WORK?
  - C. WHAT BENEFITS TO EXPECT FROM BATTERY LIFE
  - D. HOW DOES BATTERY OPTIMIZATION WORK?
5. HOW TO TEST THE SIGNAL STRENGTH
6. HOW TO TAKE CARE OF LINKASE PRO
- #. GUIDE TO CHECK YOUR BAND

## 1. HOW TO FIT LINKASE PRO

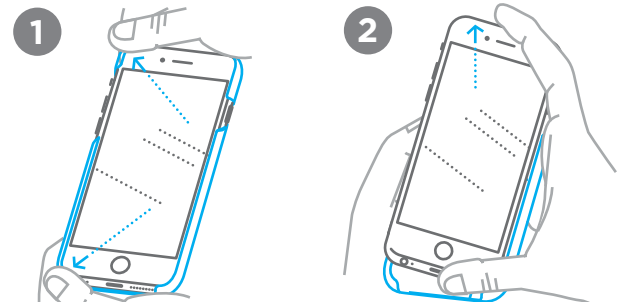
### HOW TO PUT ON THE CASE:



**STEP 1:** slide the right side of the iPhone into the LINKASE first.

**STEP 2:** then push in the left side of the iPhone until you feel a 'click'.

### HOW TO TAKE IT OFF:

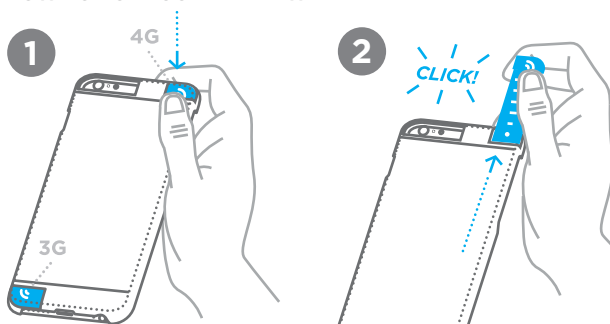


**STEP 1:** push out the left side corners until the case pops out.

**STEP 2:** you can now pull the iPhone out from the left side.

## 2. HOW TO USE THE EMW ELEMENTS

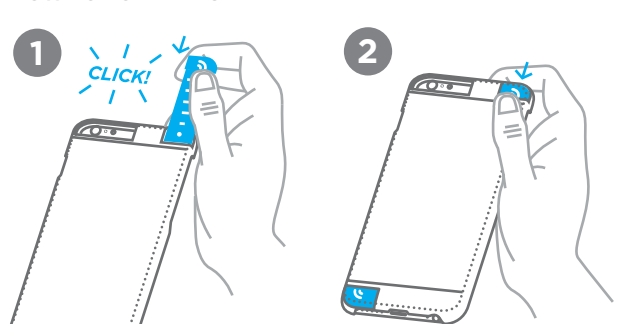
### HOW TO PULL OUT THE EMW ELEMENT:



**STEP 1:** press the EMW element with your thumb and your index finger.

**STEP 2:** pull it out until you feel a 'click'.

### HOW TO PUT IT BACK IN:



**STEP 1:** press the top of the EMW element with your index finger until it clicks.

**STEP 2:** push it in until it draws all the way back inside.

### 3. ABOUT 3G/4G EMW: TO ENHANCE YOUR 3G CONNECTION OR VOICE CALL, PULL OUT THE 3G EMW.

## A. Who can benefit from 3G EMW?

**Any subscribers to band 1 or 2 3G services who wish to receive a better connection when they are in “operating mode”.** EMW is specifically designed in operating mode to redirect the energy that’s being blocked by your body into better use. These are the over countries and operators around the world under these conditions:

AFRICA			ASIA			EUROPE			LIECHTENSTEIN			
Country	Operator	Band	Country	Operator	Band	Country	Operator	Band	Country	Operator	Band	
Angola	Unitel	1	Bangladesh	Teletalk	1	Albania	AMC	1	Liechtenstein	Telekom FL	1	
Egypt	Etisalat EG	1	Brunei	B-Mobile	1	Albania	Vodafone Albania	1	Lithuania	Bite	1	
Egypt	Mobinil	1	Cambodia	Mobite	1	Andorra	STA	1	Lithuania	Omnitel	1	
Egypt	Vodafone EG	1	Cambodia	Shinawatra	1	Armenia	Orange	1,8	Luxembourg	Tele2	1	
Ghana	MTN GH	1	China	China Unicom	1	Armenia	MTS	1	Luxembourg	LusGSM	1	
Kenya	Safaricom	1	Hong Kong	3	Armenia	Beeline	1	Luxembourg	Tango	1		
Kenya	Orange KE	1	Hong Kong	CSL	1,8	Austria	3	Luxembourg	Orange	1		
Libya	Libyana	1	Hong Kong	PCCW Mobile	1	Austria	Mobilkom Austria	1	Macedonia	Cosmofon	1	
Mauritius	Cellplus	1	Hong Kong	Smartone	1,5	Austria	Orange	1	Macedonia	T-Mobile MK	1	
Mauritius	Emtel	1	India	Airtel	1	Austria	T-Mobile	1	Macedonia	VIP MK	1	
Morocco	Maroc Telecom	1	India	Aircel	1	Azerbaijan	Azercell	1	Malta	GO (Malta)	1	
Morocco	Meditel	1	India	Vodafone	1	Azerbaijan	Bakcell	1	Malta	Vodafone	1	
Tunisia	Orange TN	1	India	Idea	1	Azerbaijan	Nar Mobile	1	Moldova	Unite	1	
Namibia	MTC Namibia	1	India	BSNL Mobile	1	Belarus	Life :)	1	Moldova	Orange	1	
Namibia	Powercom	1	India	MTNL DOLPHIN	1	Belarus	Mobile TeleSystems	1	Moldova	Moldcell	1	
Nigeria	Glo Mobile	1	India	Reliance Comm.	1	Belarus	Velcom	1	Monaco	Monao Telecom	1	
S. Africa	Cell C	1,8	India	Tata DoCoMo	1	Belgium	BASE	1	Montenegro	Telenor Montenegro	1	
S. Africa	MTN SA	1	Indonesia	3	Belgium	Velcom	1	Montenegro	T-Mobile	1		
S. Africa	Vodacom	1	Indonesia	Encelcomindo	1	Belgium	Mobistar	1	Montenegro	Telekom Srbija	1	
Seychelles	Airtel SC	1	Indonesia	Indosat	1,8	Belgium	Proximus	1	Netherlands	T-Mobile	1,8	
Sudan	MTN SD	1	Indonesia	Telkomsel	1	Bosnia and Herzegovina	mTel BH	1	Netherlands	KPN	1	
Tanzania	Vodacom TZ	1	Japan	NTT docomo	1,9,19	...	BH Mobile	1	Netherlands	Vodafone	1	
Uganda	Uganda Telecom	1	Japan	SoftBank Mobile	1,8,11	...	ERONET Mobile Com.	1	Norway	Telenor Mobil	1,8	
Zimbabwe	Econet Wireless ZW	1	Laos	l	...	Bulgaria	Globul	1	Norway	TeliaSonera	1,8	
			Macau	3	...	Bulgaria	M-TEL	1	Norway	Network Norway	1,8	
			Macau	CTM	1	...	Bulgaria	Vivacom	1,8	Poland	T-Mobile (formmer Era)	1,8
			Malaysia	Celcom	1	...	Croatia	T-Mobile	1	Poland	Plus	1,8
			Malaysia	DiGi	1	...	Croatia	Tele2	1,8	Poland	Orange	1
			Malaysia	Maxis	1,8	...	Croatia	VIPnet	1	Poland	Play	1,8
			Nepal	Nepal Telecom	1	...	Cyprus	CYTA Mobile	1	Portugal	Optimus	1
			North Korea	Koryolink	1	...	Cyprus	MTN	1	Portugal	TMN	1
			Philippines	Globe	1,8	...	Czech Rep.	O2	1	Portugal	Vodafone	1,8
			Philippines	Digitel	1	...	Czech Rep.	T-Mobile	1	Romania	Cosmote	1
			Philippines	SMART	1,5	...	Czech Rep.	Vodafone Albania	1	Romania	Orange	1,8
			Singapore	SMART	1,5	...	Denmark	3	1,8	Romania	RCS&RDS (Digi.Mobil)	1
			Singapore	SingTel Mobile	1,8	...	Denmark	Telenor	1	Romania	Vodafone	1,8
			Singapore	StarHub	1,8	...	Denmark	TeliaSonera	1	Russia	Mobile TeleSystems	1,8
			South Korea	KT	1	...	Denmark	TDC Mobil	1	Russia	Beeline (VimpelCom)	1,8
			South Korea	SK	1	...	Denmark	Elisa	1,8	Russia	MegaFon	1,8
			Sri Lanka	Dialog	1	...	Estonia	EMT	1,8	San Marino	Prima	1
			Sri Lanka	Mobitel	1	...	Estonia	Tele2	1,8	Serbia	Mobile telephony of Sebia	1
			Sri Lanka	Etisalat	1	...	Estonia	Alands Mobiltelefon	1	Serbia	Telenor	1
			Sri Lanka	Airtel	1	...	Finland	DNA	1,8	Serbia	VIP Mobile	1
			Sri Lanka	Hutch	1	...	Finland	Elisa	1,8	Slovakia	O2	1
			Taiwan	Chungwa Telecom	1	...	Finland	TeliaSonera	1,8	Slovakia	Orange	1
			Taiwan	FarEasTone	1	...	Finland	Bouygues Telecom	1,8	Slovakia	T-Mobile	1
			Taiwan	Taiwan Mobile	1	...	France	Free	1,8	Slovakia	Si.moil	1
			Taiwan	VIBO	1	...	France	Orange	1,8	Slovakia	T-2	1
			Tajikistan	Indigo Tajikistan	1	...	France	SFR	1,8	Slovakia	Tusmobil	1,8
			Tajikistan	Babilon Mobile	1	...	Georgia	Geocell	1,8	Spain	Orange	1,8
			Tajikistan	Tacom	1	...	Georgia	Magticom	1	Spain	Movistar	1,8
			Tajikistan	TT Mobile	1	...	Germany	E-Plus	1	Spain	Vodafone	1,8
			Thailand	Advanced Wireless Net.	1,5	...	Germany	O2	1	Spain	Yoigo	1
			Thailand	DTAC	1,5	...	Germany	Telekomm	1	Sweden	3	1
			Thailand	Real Future	1	...	Germany	Vodafone	1	Sweden	Tele2	1
			Thailand	TOT	1	...	Germany	Telekomm	1	Sweden	Telenor	1
						...	Germany	Vodafone	1	Sweden	TeliaSonera	1
						...	Gibraltar	CTS	1	Switzerland	Orange	1
						...	Gibraltar	Gigtel	1	Switzerland	Swisscom	1,8
						...	Greece	Vodafone	1	Switzerland	Sunrise	1,8
						...	Greece	Wind	1	Turkey	Avea	1
						...	Guensey	Wave Telecom	1	Turkey	Turkcell	1
						...	Hungary	Telenor	1	Turkey	Vodafone Turkey	1
						...	Hungary	T-Mobile	1	Ukraine	UkrTelcom (former Utel)	1
						...	Hungary	Vodafone	1,8	U.K.	EE	1
						...	Iceland	Siminn	1,8	U.K.	3	1
						...	Ireland	3	1	U.K.	O2	1,8
						...	Ireland	Meteor	1	U.K.	Vodafone	1,8
						...	Ireland	O2	1			
						...	Ireland	Vodafone	1			
						...	Isle of Man	Manx Telecom	1			
						...	Italy	3	1			
						...	Italy	TIM	1			
						...	Italy	Vodafone	1			
						...	Italy	Wind	1			
						...	Jersey	Jersey Telecom	1			
						...	Jersey	sure.Mobile	1			
						...	Jersey	Airtel-Vodafone	1			
						...	Latvia	Bite	1			
						...	Latvia	LMT	1			
						...	Latvia	Tele2	1			
						...	Liechtenstein	Orange	1			
						...	Liechtenstein	Mobilkom Austria	1			

AMERICAS			MIDDLE EAST			OCEANIA		
Country	Operator	Band	Country	Operator	Band	Country	Operator	Band
Argentina	Claro AR	2,5	Bahrain	Batelco	1	Australia	Optus	1,8
Argentina	Movistar	2,5	Bahrain	Zain	1	Australia	Telstra	1,5
Argentina	Telecom Personal AR	2,5	Bahrain	Viva	1	Australia	VHA	1,5,8
Aruba	SetarNV	1	Israel	Cellcom	1,8	New Zealand	2degrees	1,8
Brazil	Brasil Telecom	1	Israel	Golan Telecom	1	New Zealand	Telecom NZ	1,5
Brazil	Claro BR	1,5	Israel	Hot Mobile	1,5	New Zealand	Vodafone NZ	1,8
Brazil	CTBC	1	Israel	Orange	1,8			
Brazil	Oi	1	Israel	Pelephone	1,5			
Brazil	TIM BR	1	Iraq	Mobitel	1			
Brazil	Vivo	1,5	Kuwait	Wataniya Telecom	1			
Canada	Bell Mobility	2,5	Kuwait	Zain	1			
Canada	Telus	2,5	Qatar	Q-TEL	1			
Canada	SaskTel	2,5	Saudi Arabia	Al Jawal	1			
Canada	MTS	2,5	Saudi Arabia	Mobily	1			
Canada	Mobilicity	4	Saudi Arabia	Zain	1			
Canada	Rogers Wireless	2,5	Syria	Spacetel	4			
Canada	Videotron	4	Syria	Syriatel	4			
Canada	Wind Mobile	4	United Arab Emirates	du	1			
Chile	Entel PCS	2	...	Etisalat	1			
Chile	Nextel CL	4						
Chile	VTR	4						
Colombia	Claro CO	2,5						
Colombia	Movistar	2,5						
Colombia	TIGO CO	2						
Costa Rica	Claro CR	1						
Costa Rica	Movistar CR	1,5						
Ecuador	Claro EC	2,5						
Ecuador	Movistar EC	2,5						
El Salvador	Claro SV	2						
El Salvador	Movistar SV	2,5						
Honduras	Claro HN	2						
Mexico	Movistar MX	2,5						
Mexico	Telcel	2,5						
Nicaragua	Movistar NI	2,5						
Nicaragua	Claro NI	2,5						
Panama	Claro PA	2						
Panama	Digicel PA	2						
Panama	Movistar PA	2,5						
Paraguay	Claro PY	2						
Peru	Claro PE	2						
Pto. Rico	AT&T Mobility	2,5						
Pto. Rico	Claro Puerto Rico	2,5						
Trinidad and Tobago	digicel TT	2,5						
...	TSTT	2,5						
U.S.A.	AT&T Mobility	2,5						
U.S.A.	T-Mobile US	2,4						
U.S.A.	I wireless	4						
U.S.A.	Cincinnati Bell	4						
Uruguay	Ancel	4,5						
Uruguay	Claro UY	2						
Uruguay	Movistar UY	2,5						
Venezuela	Movilnet	2,5						
Venezuela	Movistar VE	2,5						

Some operators do not only provide services to a single UMTS band. For example HK CSL provides it on both bands 1 and 8. Switches between these bands will be controlled by the operator. LINKASE PRØ can only work when switched to band 1, 2 or 4. Read the last page of this manual to learn how to find out which band you’re using at any given time.

### 3. ABOUT 3G/4G EMW: (continues)

## B. Who can benefit from 4G EMW?

**Any subscribers to band 3, 4, 7, 38, 39 or 40 4G/LTE services who wish to receive a better connection when they are in “operating mode”.** EMW is specifically designed in operating mode to redirect the energy that’s being blocked by your body into better use. These are the countries and operators around the world under these conditions:

AFRICA	Country	Operator	Band
	Angola	Movitel	3
	Ghana	Blu Telecom	38
	Ghana	Surflife	7
	Ivory Coast	YooMee	40
	Madagascar	Blueline	40
	Mauritius	Emtel	3
	Mauritius	Orange	3
	Namibia	MTC Namibia	3
	Namibia	TN Mobile	3
	Nigeria	Smile	20
	Nigeria	Spectranet	40
	Nigeria	SWIFT	40
	S. Africa	MTN SA	3
	S. Africa	Neotel	3
	S. Africa	Telkom	40
	S. Africa	Vodacom	3
	Tanzania	Smile	20
	Uganda	MTN	41
	Uganda	Orange	20
	Uganda	Smile	20
	Zambia	MTN	7
	Zambia	Zamtel	7
	Zimbabwe	Net*One	3
AMERICAS	Country	Operator	Band
	Aruba	SetarNV	3
	Bolivia	Entel	13
	Bolivia	Tigo	17
	Brazil	Brasil Telecom	38
	Brazil	Claro BR	7
	Brazil	Nextel	3
	Brazil	Oi	7
	Brazil	SKY BR	38
	Brazil	TIM	7
	Brazil	Vivo	7
	Canada	ABC Communications	42
	Canada	Bell	4,7
	Canada	Eastlink	4
	Canada	MTS	4
	Canada	Rogers	4,7
	Canada	Sasktel	4
	Canada	Telus	4
	Canada	Videotron	4
	Cayman Is.	Digicel	3
	Cayman Is.	Lime	17
	Chile	Claro	7
	Chile	Entel	7
	Chile	Movistar	7
	Colombia	Avantel	4
	Colombia	Claro CO	7
	Colombia	DirecTV	38
	Colombia	ETB	4
	Colombia	MOVistar	4
	Colombia	Tigo	4,7
	Costa Rica	Claro CR	3
	Costa Rica	ICE Celular	7
	Costa Rica	Movistar CR	3
	Dominican R.	Claro	4
	Dominican R.	Orange	3
	Dominican R.	Tricom	2
	Ecuador	CNT Mobile	4
	Guatemala	Movistar	2
	Mexico	Movistar MX	4
	Mexico	Nextel	4
	Mexico	Telcel	4
	Paraguay	Personal	2
	Paraguay	VOX	4
	Peru	Claro PE	2
	Peru	Movistar	4
	Peru	Entel	4
	Pto. Rico	AT&T	4,17
	Pto. Rico	Claro Puerto Rico	17
	Pto. Rico	Open Mobile	13
	Pto. Rico	Sprint	25
	Pto. Rico	T-Mobile	4
	U.S.A.	AT&T	4,17
	U.S.A.	T-Mobile US	4,12
	U.S.A.	Sprint	25,26
	U.S.A.	Verizon	4,13
	Uruguay	Antel	4
ASIA	Country	Operator	Band
	Armenia	VivaCell-MTS	7
	Azerbaijan	Azercell	3
	Brunei	DSTCom	3
	Cambodia	Smart	3
	China	China Mobile	41
	China	China Telecom	41
	China	China Unicom	41
	Georgia	A-Mobile	20
	Georgia	AquaFon	20
	Hong Kong	3	3
	Hong Kong	China Mobile	3,7,40
	Hong Kong	CSL	3,7
	Hong Kong	Genius	7
	Hong Kong	PCCW Mobile	3
	Hong Kong	Smartone	3
	India	Airtel	40
	India	Airtel	40
	Indonesia	PT Internux	40
	Indonesia	XL Axiata	3
	Japan	AU	1,118
	Japan	NTT docomo	3,9,2
	Japan	SoftBank Mobile	1,41
	Japan	Ymobile	3,9
	Malaysia	Celcom	3,7
	Malaysia	DiGi	7
	Malaysia	Maxis	3,7
	Malaysia	Telekom Malaysia	5
	Malaysia	U Mobile	7
	Maldives	Ooredoo	7
	Pakistan	Zong	3
	Philippines	Globe	3,7,41
	Philippines	PLDT	42
	Philippines	SMART	1,3,5
	Singapore	M1	3,7
	Singapore	SingTel Mobile	3,7
	Singapore	StarHub	3,7
	South Korea	KT	3,8
	South Korea	LG U+	1,5,7
	South Korea	SK	3,5
	Sri Lanka	Dialog	3,40
	Sri Lanka	Lanka Bell	40
	Sri Lanka	Mobitel	3
	Sri Lanka	SLT	38
	Taiwan	Chungwa Telecom	3
	Taiwan	FarEasTone	3,28
	Taiwan	Taiwan Star Telecom	3,28
	Taiwan	VIBO	8
	Tajikistan	Babilon Mobile	1,3
	Tajikistan	Tcell	20
	Thailand	DTAC	1
	Thailand	TrueMove-H	1
	Uzbekistan	Beeline	7
	Uzbekistan	Ucell	7,13
MIDDLE EAST	Country	Operator	Band
	Bahrain	Batelco	3
	Bahrain	Zain	3
	Bahrain	Viva	3
	Iraq	RT / Fastlink	7
	Israel	Cellcom	3
	Israel	Orange	3,7
	Israel	Pelephone	3
	Lebanon	Alfa	3
	Lebanon	Touch	3
	Kuwait	Ooredoo	3
	Kuwait	Zain	3
	Oman	Nawras	3
	Oman	Omtel	3,40
	Qatar	Ooredoo	3,7,20
	Qatar	Vodafone	3,20
	Saudi Arabia Mobily		3,38
	Saudi Arabia STC		3,40
	Saudi Arabia Zain		3,38
	United Arab Emirates		
	...	du	3
	...	Etisalat	3,7
EUROPE	Country	Operator	Band
	Austria	3	3,7
	Austria	A-1	7,20
	Austria	T-Mobile	3,7
	Belgium	B-lite	42
	Belgium	BASE	3
	Belgium	Proximus	3
	Bulgaria	Max	3
	Croatia	T-Hrvatski Telekom	3,20
	Croatia	VIPnet	3,20
	Czech Rep.	O2	3,20
	Czech Rep.	T-Mobile	3,20
	Czech Rep.	Vodafone	3,8,20
	Denmark	3	3,7
	Denmark	TDC	7,20
	Denmark	Telenor	3,7,20
	Denmark	Telia	3,7
	Estonia	Elisa	3,7,20
	Estonia	EMT	3,7,20
	Estonia	Tele2	3,7
	Finland	DNA	3,7
	Finland	Elisa	3,7,20
	Finland	Sonera	3,7
	France	Bouygues Telecom	3,7,20
	France	Free	7
	France	Orange	7,20
	France	SFR	7,20
	Germany	E-Plus	3
	Germany	O2	20
	Germany	Telekom	3,7,20
	Germany	Vodafone	7,20
	Greece	Cosmote	3
	Greece	Vodafone	3
	Greenland	Tele Greenland	20
	Hungary	Telenor	3
	Hungary	T-Mobile	20
	Iceland	Nova	3
	Iceland	Siminn	3
	Iceland	Vodafone	3,20
	Ireland	3	3
	Ireland	Meteor	3,20
	Ireland	Vodafone	20
	Isle of Man	Manx Telecom	3
	Italy	3	3,7
	Italy	TIM	3
	Italy	Vodafone	3
	Latvia	LMT	3
	Latvia	Tele2	7
	Liechtenstein	Orange	3,7
	Lithuania	Omnitel	3
	Lithuania	Tele2	7
	Luxembourg	Orange	3
	Luxembourg	Post Telecom	3
	Luxembourg	Tango	3
	Macedonia	One	3,20
	Macedonia	T-Mobile	3,20
	Macedonia	VIP	3,20
	Malta	Vodafone	3
	Moldova	Interdnestrcom	20
	Moldova	Moldcell	7
	Moldova	Orange	7
	Monaco	Monao Telecom	7,20
	Montenegro	Telenor Montenegro	7
	Montenegro	T-Mobile	3,7
	Netherlands	KPN	3,7,20
	Netherlands	T-Mobile	3,20
	Netherlands	Vodafone	3,20
	Netherlands	UPC / Ziggo	7
	Norway	Telenor	3,7,20
	Norway	NetCom	3,7,20
	Norway	Tele2	3
	Poland	Orange	3
	Poland	Play4	3
	Poland	Sferia	3,38
	Poland	T-mobile	3
	Portugal	Meo	3,7,20
	Portugal	NOS	3,7,20
	Portugal	Vodafone	3,7,20
	Romania	Orange	3,7
	Romania	Telekom	3
	Romania	Vodafone	3,7,20
	Russia	Beeline	7,20
OCEANIA	Country	Operator	Band
	Australia	Optus	3,7,40
	Australia	Telstra	3,28
	Australia	Vodafone	3,5
	Fiji	Digicel	3,20
	Fiji	Vodafone	3
	New Zealand	2degrees	3
	New Zealand	Spark	3,28
	New Zealand	Vodafone NZ	3,28
	Papua N.G.	Digicel	28
Russia	Country	Operator	Band
	Russia	MegaFon	7,20,38
	Russia	Motiv	3
	Russia	MTS	7,38
	Russia	Rosteklecom	40
	Slovakia	Orange	7,20
	Slovakia	Slovak Telekom	3,7,20
	Slovenia	Si.mobil	3,7,20
	Slovenia	Telekom Slovenije	3,20
	Spain	Movistar	3,7
	Spain	Orange	3,7
	Spain	Vodafone	3,7
	Spain	Yoigo	3
	Sweden	3	7,20,38
	Sweden	Net3Mobility	3,7,20
	Sweden	TeliaSonera	3,7,20
	Switzerland	Orange	3,7,20
	Switzerland	Sunrise	3,7,20
	Switzerland	Swisscom	3,7,20
	U.K.	3	3,20
	U.K.	EE	3,7
	U.K.	O2	20
	U.K.	UK Broadband	42,43
	U.K.	Vodafone	20

Some operators do not only provide services to a single UMTS band. For example HK CSL provides it on both bands 1 and 8. Switches between these bands will be controlled by the operator. LINKASE PRØ can only work when switched to band 1, 2 or 4. Read the last page of this manual to learn how to find out which band you're using at any given time.

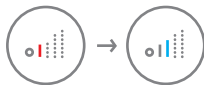
### 3. ABOUT 3G/4G EMW: (continues)

#### C. When to use 3G/4G EMW?



**3G/4G EMW WORKS BEST WHEN SIGNAL LEVEL IS LOW (LESS THAN 3 BARS OR <-100DB).**  
When signal is over 3 bars, the mobile should receive maximum potential data rate and reception. **To save power, you should use EMW no matter talking or accessing data.**

#### D. What benefits to expect with 3G/4G EMW



**SIGNAL LEVEL CHANGE ON YOUR SCREEN**

Sometimes the signal change may be immediate, sometimes will be delayed by the communication with radio tower. 3G EMW is tested to provide almost a constant 1 signal bar enhancement when the signal level is low.



**BETTER DATA RATE ON YOUR NETWORK**

To find out more about the increase in data rate, we encourage our users to download the free third-party app "fieldtester" to find out the connection status in your network. To result a better data rate on your network, the initial condition must be lower than your network potential. If you already receiving a maximum data rate possible from your network, you will not receive any additional bandwidth from LINKASE PRO.



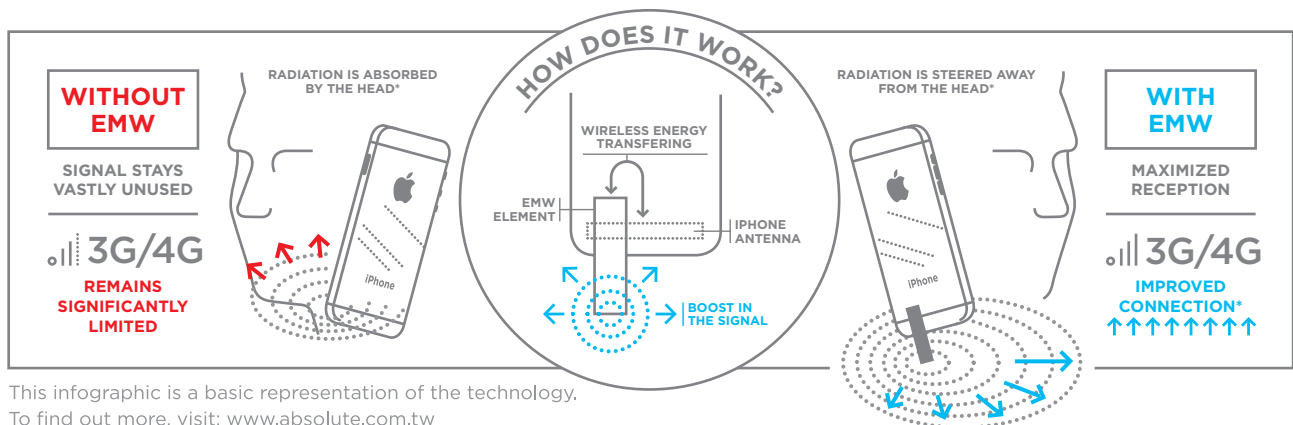
**LESS DROPPED CALLS (ONLY ON 3G)**

To experience more consistency during phone calls, extend the EMW element.

#### E. How does 3G/4G EMW work?

**REDIRECT LOST ENERGY TO MAXIMIZE SIGNAL RECEPTION:**

EMW (our patented technology) steers radiation energy emitted by the iPhone away from the head and body and into open space, improving cellular signal significantly.



All cellular phones use radiation for signal reception. However, in these handsets, most of the energy is used inefficiently, therefore limiting connectivity. Users are left with mediocre signal reception while still enduring a certain amount of SAR impact, which refers to the amount of energy mobile devices can radiate directly to the human body according to international health regulations.

Our EMW technology steers radiation energy into open space. This has 2 positive direct effects:

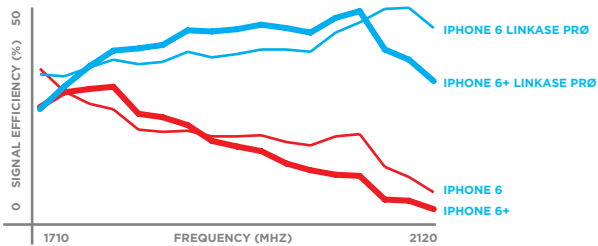
**1. Signal reception is significantly improved as the energy flows from a wider angle**

**2. Shifting the radiation energy activity further from the head reduces the SAR impact**

### 3. ABOUT 3G/4G EMW: (continues)

#### F. How much improvement can you get with 3G EMW?

**3G EMW dramatically raises your signal efficiency from 1710MHz to 2170MHz in the 'user mode'**, that is, the primary bands for 3G network. By raising the performance on your mobile in these frequencies, the signal level is greatly benefited.



UMTS BAND	SIGNAL EFFICIENCY
BAND1 Upload: 1920 - 1980MHz Downl.: 2110 - 2170MHz	<b>2X improvement</b> <b>3.5X improvement</b>
BAND2 Upload: 1850 - 1910MHz Downl.: 1930 - 1990MHz	<b>1.75X improvement</b> <b>2X improvement</b>

To read the detailed testing report from an official CTIA lab, please visit: <http://absolute.com.tw/download/ctia7.pdf>

#### G. How much improvement can you get with 4G EMW?

**4G EMW dramatically raises your signal efficiency in different frequencies in the 'user mode'**, that is, the primary bands for 4G network. By raising the performance on your mobile in these frequencies, the signal level is greatly benefited.

On average, 4G EMW provides a 20% signal improvement (one extra signal bar).

UMTS BAND	SIGNAL EFFICIENCY
BAND3 Upload	<b>2X improvement</b>
BAND3 Download	<b>2X improvement</b>
BAND4 Upload	<b>2X improvement</b>
BAND4 Download	<b>2X improvement</b>
BAND7 Upload	<b>2X improvement</b>
BAND7 Download	<b>2X improvement</b>
BAND38 Upload	<b>2X improvement</b>
BAND38 Download	<b>2X improvement</b>
BAND39 Upload	<b>2X improvement</b>
BAND39 Download	<b>2X improvement</b>
BAND40 Upload	<b>2X improvement</b>
BAND40 Download	<b>2X improvement</b>

To read the detailed testing report from an official CTIA lab, please visit: <http://absolute.com.tw/download/ctia7.pdf>

END OF THE SECTION

### 5. ABOUT BATTERY OPTIMIZATION:

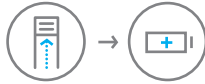
TO OPTIMIZE YOUR BATTERY LIFE ALWAYS USE EMW WHEN ACCESSING DATA OR MAKING CALLS.

#### A. Who can benefit from battery optimization?

Anyone who is using LINKASE PRO when they are performing within a cellular network.

## 4. ABOUT BATTERY OPTIMIZATION:

### B. When does optimization work?



The optimization will take place when you pull out the 3G or 4G EMW element. (read the beginning of the instructions on how to do that)

### C. What benefits to expect from battery life



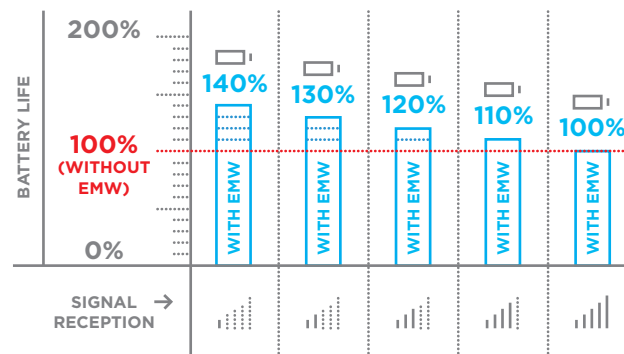
**AN AVERAGE OF 20% EXTENSION FROM YOUR CURRENT BATTERY LIFE, WHICH MEANS 40 MINUTES MORE TALKING TIME, OR 30 MINUTES MORE INTERNET BROWSING TIME.**

All battery claims depend on the cellular network, location, signal strength, features configuration, usage, and many other factors; actual results may vary.



**BATTERY OPTIMIZATION DIRECTLY DEPENDS ON THE CONDITIONS PROVIDED BY THE CELLULAR NETWORK AND THE SIGNAL STRENGTH. AN EXPECTED/TYPICAL OPTIMIZATION RATIO IS SHOWN ON THE CHART BELOW.**

Both talk time and internet over 3G/4G tests were conducted by Absolute in October 2014 using an iPhone 6 (model number A1524 with iOS 8.1.0) on GSM and LTE networks. All settings were the default ones except WIFI and Auto-Brightness (both were turned off). Both tests were conducted on a left hand operating position. Internet-4G tests were conducted video streaming over a 4G network at different signal levels.



Saving battery life with EMW becomes more effective when running in lower signal conditions

### D. How does battery optimization work?

Did you ever feel the phone going warmer when your signal is low? That means the phone is using a lot of its power to ensure you get a good connection. A lot of its energy is wasted during this process.

**LINKASE PRO can raise the reception at all signal levels. When your signal is low, LINKASE PRO can provide you with a very distinct improvement. When your signal is high, LINKASE PRO can still provide you with a significant signal boost (despite not visualizing any change on iOS's signal bars).**

This boost in reception will create significant power saving on your iPhone when connecting to the network. Your phone won't need to work as hard! This is why we encourage all users to use EMW when accessing a network. Enjoy the extra 'air' time.

WITHOUT EMW	WITH EMW

## 5. HOW TO TEST THE SIGNAL STRENGTH

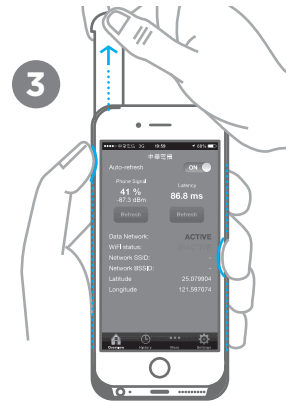
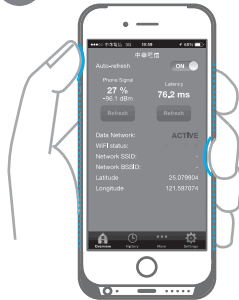
(IT REQUIRES A WORKING INTERNET CONNECTION)

**1** *Field Tester* is an app developed by Staircase 3.  
© 2013 Staircase3, Inc

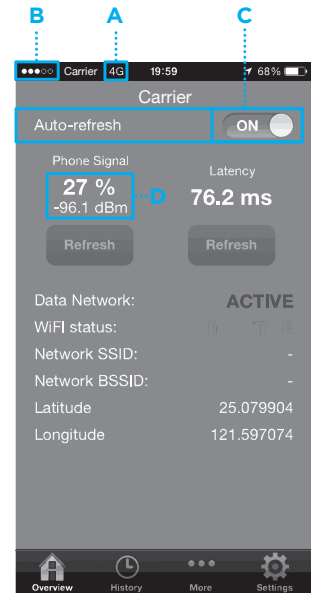


**STEP 1:** download the free 3rd party app 'Field Tester' on the App Store (scan QR code for quick access). Open the app.

**2** make sure you're holding the iPhone normally, like the image illustrates. Observe whether you're in 3G or 4G mode (A), what's your signal bar status (B) and make sure auto-refresh is 'on' (C). Take note of the **signal percentage (D)**.



**STEP 3:** pull out the 3G or 4G EMW (depending on what mode you're on) while holding the phone the same way (for consistent results). **Notice the boost on the signal percentage (D)** and possibly the signal bar (B).



END OF THE SECTION

## 6. HOW TO TAKE CARE OF LINKASE PRØ

**WHAT ELSE DO YOU NEED TO LEARN ABOUT LINKASE PRØ:**

There is **no battery inside** LINKASE PRØ

It is **not a radioactive device**, use it just as any regular case.

**Use EMW with caution:** when around other people, be careful to not poke them with it.

**Do not attempt to remove the EMW element** out of LINKASE PRØ when you pull it out. It is not designed to be replaceable.

**Do not rub LINKASE PRØ against soft/delicate surfaces.** It may result in damage to this other surfaces because of LINKASE PRØ's rough multi-layered coating.

LINKASE PRØ **is not water proof**, so please do not use LINKASE PRØ under water, as it may result in damage to your phone.

**ADVICE TO KEEP YOUR LINKASE PRØ LIKE NEW:**

Try to keep the case away from oils and other organic materials.

When the surface is dirty, use a moist cloth (one without loose fibers/threads) to clean it.

Do not use cleaning detergents, only water or mild alcohol.

To avoid cracks, do not bend the case excessively.

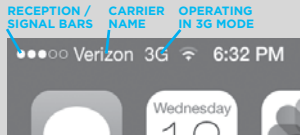
END OF THE SECTION



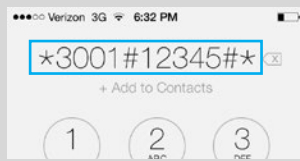
## #. GUIDE TO CHECK YOUR BAND. A: 3G

FOR IPHONE 5 & IPHONE 5S.

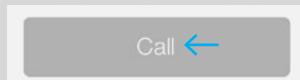
**1:** In 3G mode, you will see this at the top-left side of your screen.



**2:** On the phone-dial page, type: \*3001#12345#\*

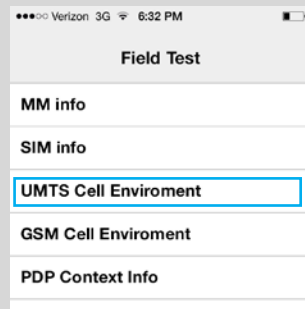


**3:** Press 'Call' on the bottom of the screen.

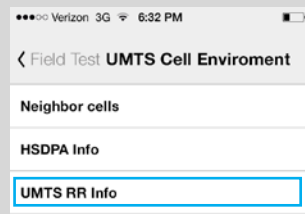


You will then access the Service Mode (Field Test).

**4:** Once inside Service Mode, select 'UMTS Cell Environment'.

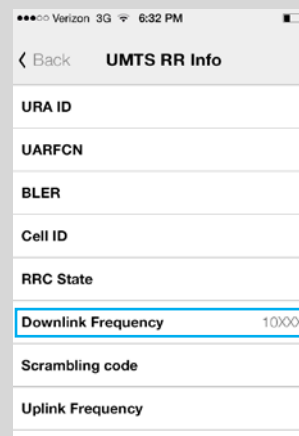


**5:** Then select 'UMTS RR Info'



You can now see the signal information on the screen.

**6:** Check the information of Downlink Frequency in the middle of the page.



If you are in **BAND 1**, the Downlink Frequency will be within **10562** and **10838**.

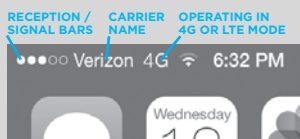
If you are in **BAND 2**, the Downlink Frequency will be within **9262** and **9538** (or, exceptionally, also **12, 37, 62, 87, 112, 137, 162, 187, 212, 237, 262** or **287**).

**In any of these cases, you can benefit from LINKASE PRØ's signal enhancement.**

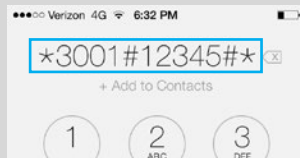
However, if your Downlink Frequency didn't match the above ranges, it means you are not on bands 1 or 2. Therefore, you won't be able to benefit from LINKASE PRØ's 3G signal enhancement. Reach us at [info@abso-lute.com.tw](mailto:info@abso-lute.com.tw) for more support.

## B: 4G/LTE FOR IPHONE 5 & IPHONE 5S.

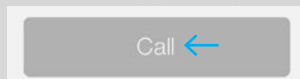
**1:** In 4G/LTE mode, you will see this at the top-left side of your screen.



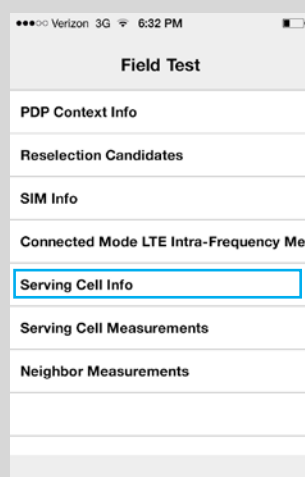
**2:** On the phone-dial page, type: \*3001#12345#\*.



**3:** Press 'Call' on the bottom of the screen.

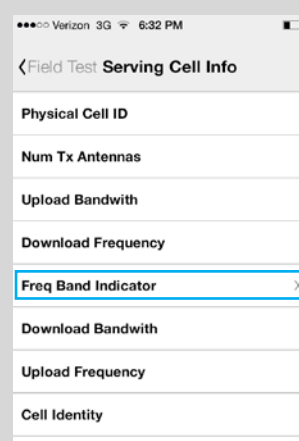


**4:** Once inside Service Mode, select 'Serving Cell Info'.



You can now see the signal information on the screen.

**5:** Check the information of 'Freq Band Indicator' in the middle of the page.



**If you are in BAND 3, BAND 4, BAND 7, BAND 38, BAND 39 or BAND 40, you can benefit from LINKASE PRØ's signal enhancement.**

However, if your Downlink Frequency didn't match the above ranges, it means you are not on bands 3, 4, 7, 38, 39 or 40. Therefore, you won't be able to benefit from LINKASE PRØ's 4G signal enhancement. Reach us at [info@abso-lute.com.tw](mailto:info@abso-lute.com.tw) for more support.